

SC-HID

P - RIBBON™

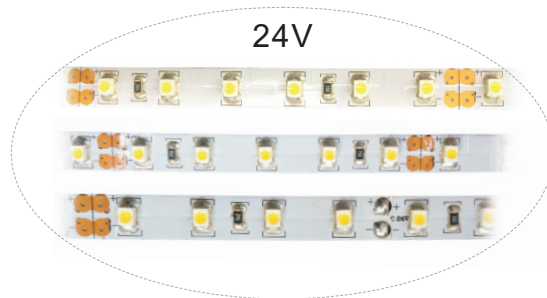


Application

- edge-light of signage, channel letter
- home lights: kitchen, bedroom, corridor, furniture
- commercial building interior light
- general lighting for shop, museum, hospital, theater
- decorative lights for pub, disco, club, KTV

Descriptions

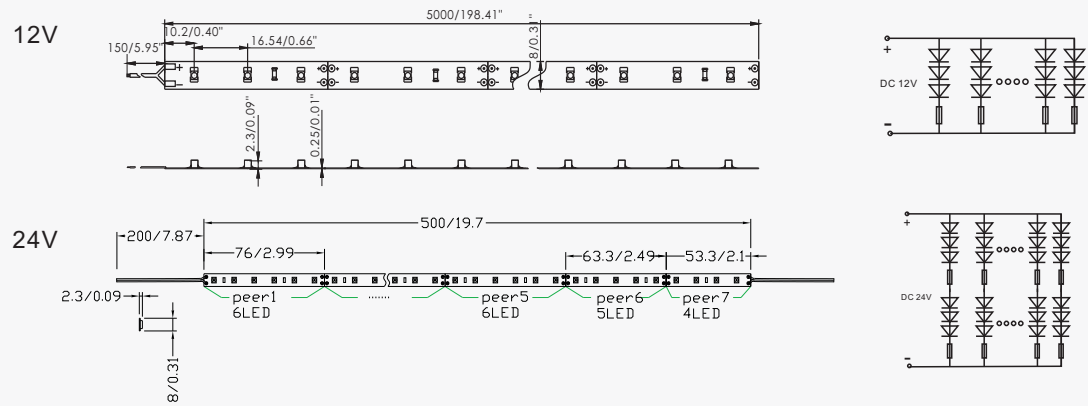
- the length is 5 meters and width is 8mm, packed in roll
- assembled with 390 power 1210 packing SMD LEDs
- 3M double-sided adhesive tape on PCB back
- 12VDC @ 63 watts
- beam angle 120 degrees
- light output 300 lux measured from 10mm distance, 500 lux from 5mm distance
- max. 50 degrees celsius in free air
- color available in warm white 2700-3200K and pure white 5500-7000K
- weight 0.22KG
- standard warranty: 3 years



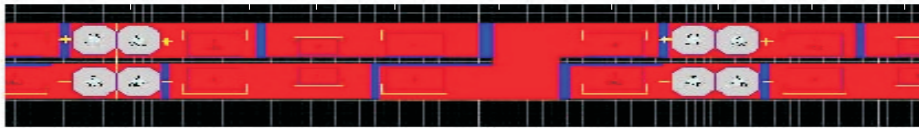
Assembly Information

- Solder connection should only be performed on designated solder pads (marked " +/- "). During soldering, don't exceed the maximum soldering time of 10 seconds and the maximum soldering temperature of 260 Celsius degrees.
- The smallest unit (3 LEDs) can be removed by cutting with scissors between the designated solder pads.
- The mounting of the ribbon is facilitated by means of the double-sided adhesive on the back-surface of the ribbon. Care must be taken to provide a clean and dry mounting surface, free of oils or silicone coatings as well as dirt particles.
- The mounting substrate must have sufficient structural integrity. Take care to completely remove the adhesive backing. Once the ribbon is appropriately positioned. Press on the ribbon with about 20N/cm² (refer to application techniques of 3M adhesive transfer tapes).
- The minimum bending radius is 2 cm. The ribbon may be bent over a smaller radius of the circuit board containing no electronic components and such bends should be made once and fixed in position to avoid cyclic fatigue.

Dimension drawing (Unit:mm/inch)


Technical parameters

Model Number	Color	Length (m)	LED Q'ty	LED Type	Light Output (lumen/m)	Beam Angle (degrees)	Voltage (V DC)	Current (Amps/m)	Max.Power Consumption (W/m)	IP	Continuous Connection (m)
SC-HID-W	White	5	390	3528 SMD LED	700	120	12	1.04	12.4	20	10
SC-HID-WW	Warm White	5	390		550	120	12	1.04	12.4	20	10
SC-HID-NW	Natural White	5	390		650	120	12	1.04	12.4	20	10
SC-HID-W-24V	White	5	390		700	120	24	0.52	12.4	20	10
SC-HID-WW-24V	Warm White	5	390		550	120	24	0.52	12.4	20	10
SC-HID-NW-24V	Natural White	5	390		650	120	24	0.52	12.4	20	10



PCB drawing



front side of P-Ribbon



back side of P-Ribbon



tear 3M tape before sticking P-Ribbon


 colored power wire
length = 10cm
22 gauge

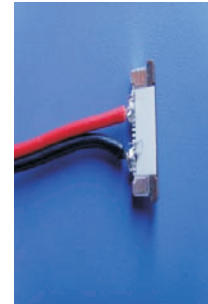
about the LEDs assembled for P-Ribbon, here there are some data. For more detailed technical information or testing reports, please contact our sales team.

Signcomplex offers joining connector and wiring connector (for power supply) for P-Ribbon.

joining connector —

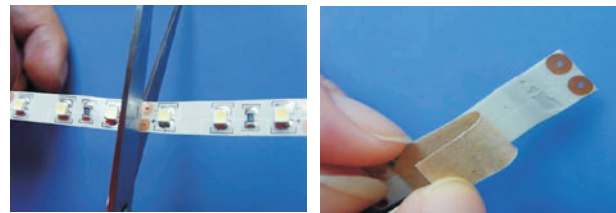


wiring connector —
wire length 20cm

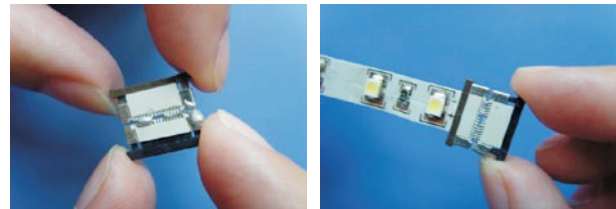


Please follow the steps as below if a connection is necessary after cut.

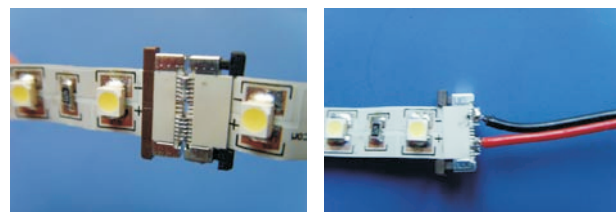
(1) cut along the mark line, tear a little bit 3M tape from the mark.
If 3M tape is not peeled off a little, it will be not easy to insert the strip.



(2) pull the plastic lock a little and make it out, insert strip, push the plastic lock to the middle.



too much strength is not allowed while pulling the plastic lock, otherwise it can destroy the connector.
make sure the soldering pads fully touch the conjunction metal.



Please be sure you choose right AC/DC power adaptor to drive P-Ribbon. Power more than 12VDC@78W is recommended. Inadequat power may not light up the strip completely. If you have difficulty to buy such adaptor locally, please turn to us.